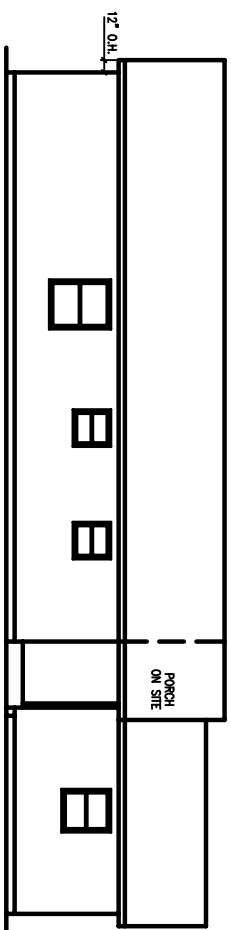
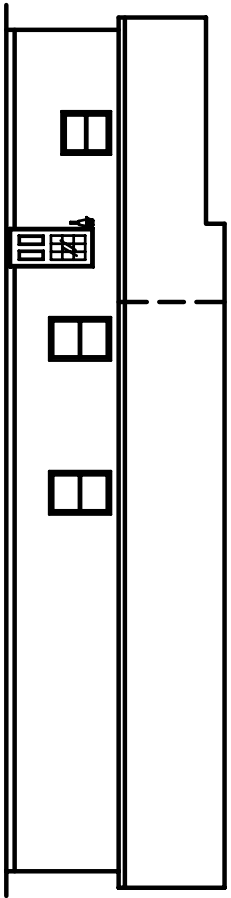


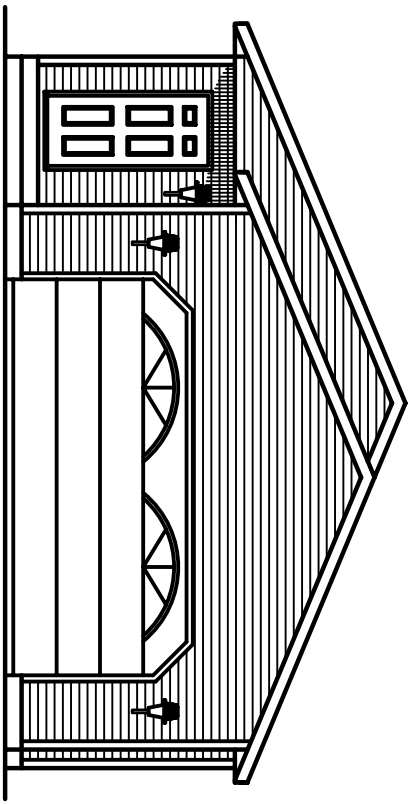
REAR ELEVATION
SCALE - 1/8" = 1'-0"



LEFT ELEVATION
SCALE - 1/8" = 1'-0"



RIGHT ELEVATION
SCALE - 1/8" = 1'-0"



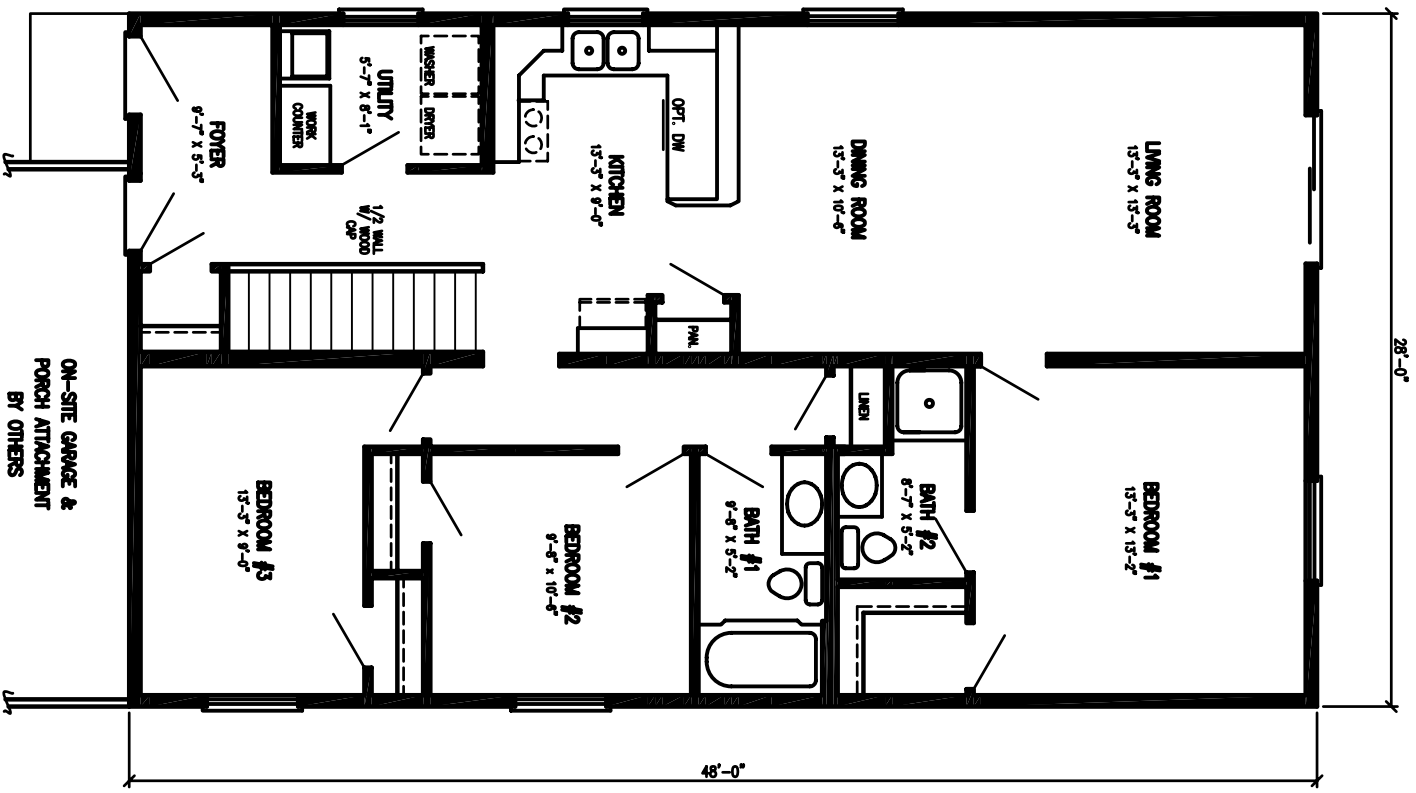
5" DOUBLE LOUVER DOOR (Typical)

FRONT ELEVATION
SCALE - 1/4" = 1'-0"

- QUOTE: -
- CUST.: -
- BUILDER: -

Stratford Homes
LIMITED PARTNERSHIP
CUSTOM MODULAR DESIGNS

SCALE:	AS SHOWN	APPROVED BY:	ISSUED BY:
DATE:	11-29-05	REVISIONS:	
28' X 48' LIVINGSTON RANCH		ELEVATIONS	
		JOB NO.:	



28'-0"

48'-0"

QUOTE: -
 CUST.: -
 BUILDER: -

Stratford Homes
 LIMITED PARTNERSHIP
 CUSTOM MODULAR DESIGNS

DATE:	11-29-06	APPROVED BY:	
SCALE:		DRAWN BY:	
28' X 48' LIVINGSTON RANCH		REVISIONS:	-
1ST FLOOR PLAN		200 NOS.	